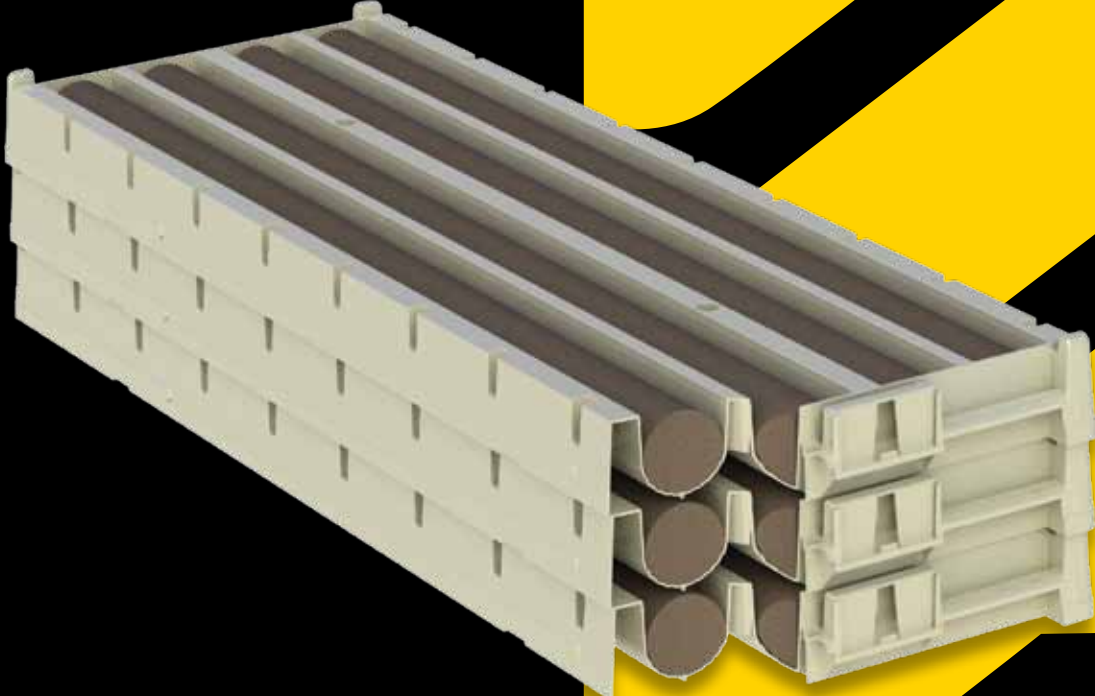


DISCOVERER®

The Ultimate in Core Storage



The Discoverer® Core Boxes/Trays - proven in the field since 1995 and used by many of the world's leading mining houses. Designed and engineered for ease of use, safety in the field and to withstand the harshest climates, from sub-zero conditions to extreme heat. Manufactured to exacting standards to give you the ultimate in core storage.



1. Nesting Capabilities

The trays nest neatly inside of each other when being shipped empty, maximizing the number of trays you can fit onto a pallet, leading to significant savings in freight.



2. Stacking Capabilities

The unique stacking design means that the trays stack perfectly on top of each other without the tray above touching the core in the tray below.



3. Full Depth Channel Height

Full Depth Channel height ensures the core sits below the ribbing, giving greater stability when stacking.



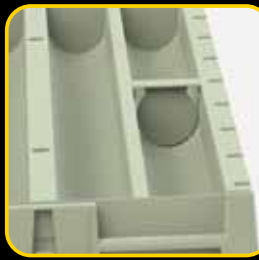
4. Lids & Lid Clips

Lids and lid clips further protect your core. Long lasting and bright white making them easy to write on.



5. Built-in Handles

Built-in Handles on both ends of the trays provide safe and easy use when handling.



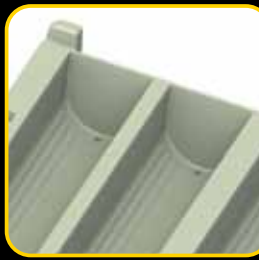
6. Clip-In Core Markers

Clip in Core Markers designed to optimize use of the tray. Colour coded to match trays. Top surface etched allowing you to record notes.



7. Bold Start Indicator

Bold Start Indicator gives clarity to drillers, reducing potential errors when logging the core.



8. Drainage Holes

Drainage holes at both ends, helping your core to dry out and to remain stored in premium condition.



9. ID Tag Area

Built in ID Tag area for optional aluminium Tags provide for a permanent record of contents.



10. Ribbing

Unique raised ribbed design improves drainage whilst making it easier to slide the core into the tray. This assists in the field, helping to retain the quality of the core.



Series 1

B Core Tray

Length 1065mm
Width 385mm
Height 60mm
Diameter 38mm
Core Capacity: 7 metres
Colours: Pastel Grey
Weight: approx 2.3kgs
Pallet Qty:
Truck approx. 125
Container* approx. 129



Series 2

H Core Tray

Length 1065mm
Width 385mm
Height 81mm
Diameter 65mm
Weight: approx 2.1kgs
Core Capacity: 4 metres
Colours: Pastel Green
Pallet Qty:
Truck approx. 132
Container* approx. 156



Series 2

N Core Tray

Length 1065mm
Width 385mm
Height 67.5mm
Diameter 52.5mm
Weight: approx 1.9kgs
Core Capacity: 5 metres
Colours: Beige
Pallet Qty:
Truck approx. 171
Container* approx. 191



Series 2

P Core Tray

Length 1065mm
Width 385mm
Height 106mm
Diameter 86.5mm
Weight: approx 2.4kgs
Core Capacity: 3 metres
Colours: Pastel Blue
Pallet Qty:
Truck approx. 120
Container* approx. 126



11. Unique Locking Links

Unique Discoverer® Locking links gives superior stability when valuable pallets of core are moved around, whilst also eliminating the need for metal strapping.



Discoverer - Nesting and Stacking

When nesting inside of each other 10 rows of trays reduce down to just 459mm high. Also shown is the same number of trays filled with core, protected with lids, clips and locking device.

Product Features above relate to the Discoverer Series 2.

*Container quantity is for a standard size container, add approximately 7% for High Cube Container.

Proudly Designed and Manufactured in Australia by:

Yandina Plastics Pty Ltd

t. +61 7 5446 8088

f. +61 7 5446 8688

e. enquiries@coretrays.com

w. www.coretrays.com

32 Central Park Drive, Yandina, Queensland, 4561 AUSTRALIA