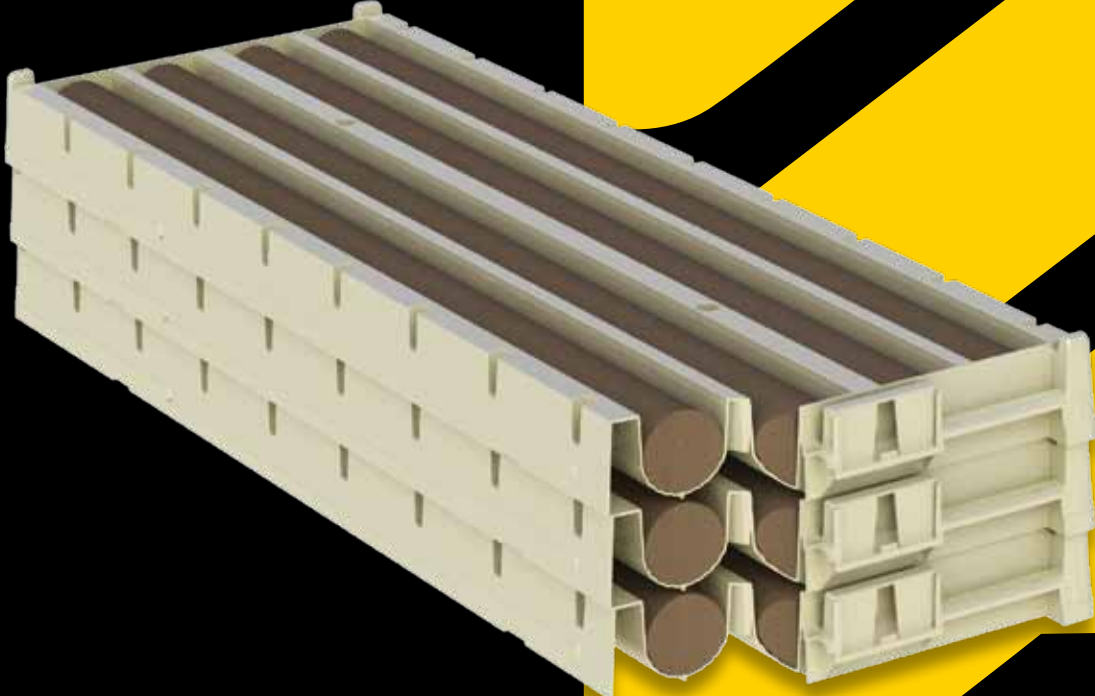


# DISCOVERER®

The Ultimate in Core Storage



The Discoverer® Core Boxes/Trays - Proven in the field since 1995 and used by many of the world's leading mining houses. Designed and engineered for ease of use, safety in the field and to withstand the harshest climates, from sub-zero conditions to extreme heat. Manufactured to exacting standards to give you the ultimate in core storage.



### 1. Nesting Capabilities

The trays nest neatly inside of each other when being shipped empty, maximizing the number of trays you can fit onto a pallet, leading to significant savings in freight.



### 2. Stacking Capabilities

The unique stacking design means that the trays stack perfectly on top of each other without the tray above touching the core in the tray below.



### 3. Full Depth Channel Height

Full Depth Channel height ensures the core sits below the ribbing, giving greater stability when stacking.



### 4. Lids & Lid Clips

Lids and Lid Clips further protect your core. Long lasting and bright white making them easy to write on.



### 5. Built-in Handles

Built-in Handles on both ends of the trays provide safe and easy use when handling.



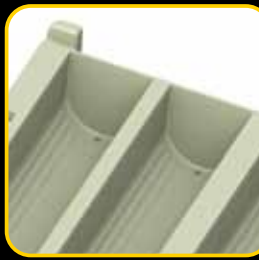
### 6. Clip-In Core Markers

Clip in Core Markers designed to optimize use of the tray. Colour coded to match trays. Top surface etched allowing you to record notes.



### 7. Bold Start Indicator

Bold Start Indicator gives clarity to drillers, reducing potential errors when logging the core.



### 8. Drainage Holes

Drainage Holes at both ends, helping your core to dry out and to remain stored in premium condition.



### 9. ID Tag Area

Built-in ID Tag area for optional aluminium tags provide for a permanent record of contents.



### 10. Ribbing

Unique raised ribbed design improves drainage whilst making it easier to slide the core into the tray. This assists in the field, helping to retain the quality of the core.



Series 1

### B Core Tray

Length: 41.92in  
Width: 15.15in  
Height: 2.36in  
Diameter: 1.49in  
Core Capacity: 22.96ft  
Colours: Pastel Grey  
Weight: approx. 5.07lb  
Pallet Qty 20ft Container\*  
Approx. 129 boxes  
Pallet Qty 40ft HC Container\*  
Approx. 150 boxes



Series 2

### H Core Tray

Length: 41.92in  
Width: 15.15in  
Height: 3.18in  
Diameter: 2.55in  
Weight: approx. 4.62lb  
Core Capacity: 13.12ft  
Colours: Pastel Green  
Pallet Qty 20ft Container\*  
Approx. 156 boxes  
Pallet Qty 40ft HC Container\*  
Approx. 177 boxes



Series 2

### N Core Tray

Length: 41.92in  
Width: 15.15in  
Height: 2.65in  
Diameter: 2.06in  
Weight: approx. 4.18lb  
Core Capacity: 16.40ft  
Colours: Beige  
Pallet Qty 20ft Container\*  
Approx. 192 boxes  
Pallet Qty 40ft HC Container\*  
Approx. 219 boxes



Series 2

### P Core Tray

Length: 41.92in  
Width: 15.15in  
Height: 4.17in  
Diameter: 3.4in  
Weight: approx. 5.29lb  
Core Capacity: 9.84ft  
Colours: Pastel Blue  
Pallet Qty 20ft Container\*  
Approx. 126 boxes  
Pallet Qty 40ft HC Container\*  
Approx. 141 boxes



### 11. Unique Locking Links

Unique Discoverer® Locking Links gives superior stability when valuable pallets of core are moved around, whilst also eliminating the need for metal strapping.



### Discoverer – Nesting and Stacking

When nesting inside of each other 10 rows of trays reduce down to just 459mm high. Also shown is the same number of trays filled with core, protected with lids, clips and locking device.

**Proudly Designed and Manufactured in Australia by:**

**Yandina Plastics Pty Ltd**

**t. +61 7 5446 8088**

**f. +61 7 5446 8688**

**e. enquiries@coretrays.com**

**w. www.coretrays.com**

32 Central Park Drive, Yandina,  
Queensland, 4561 AUSTRALIA